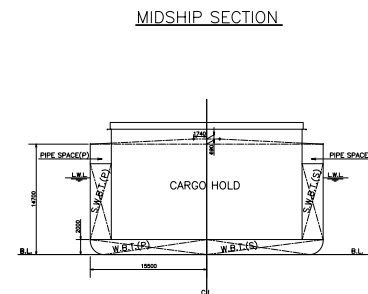
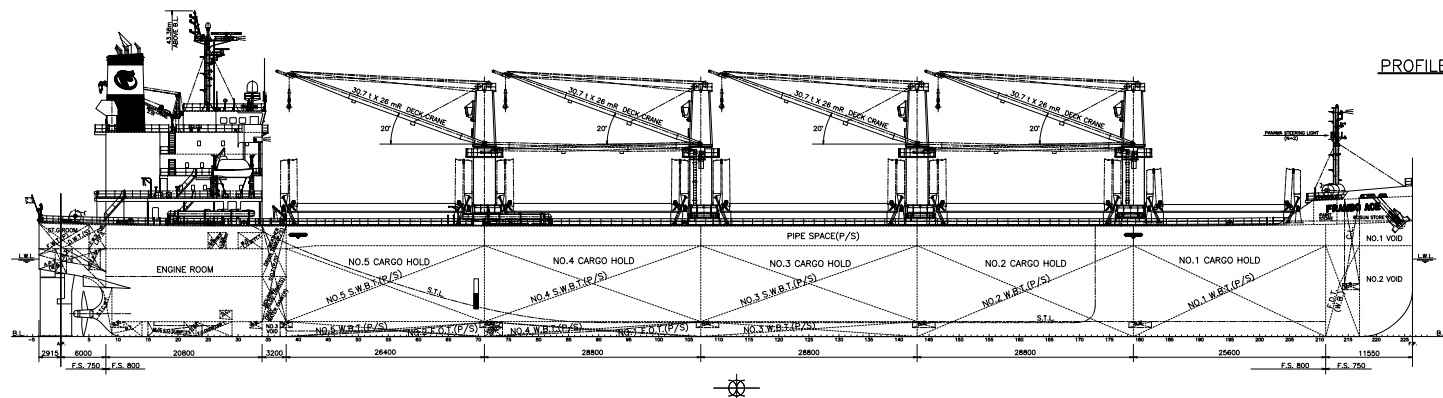


GENERAL ARRANGEMENT



A DECK

B DECK

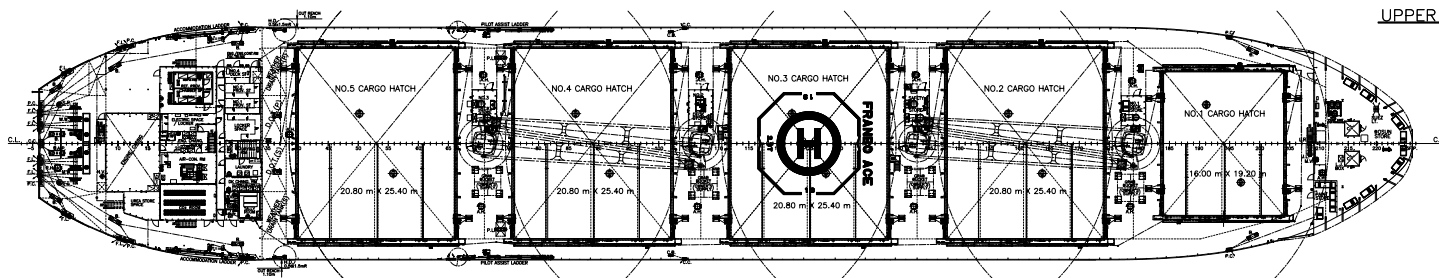
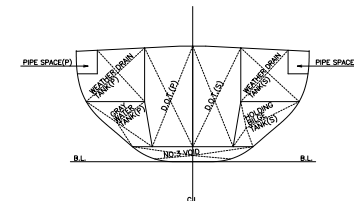
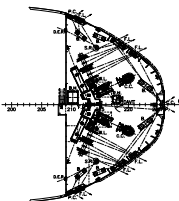
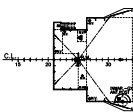
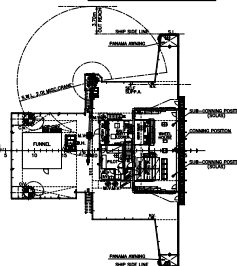
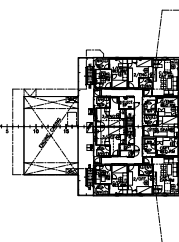
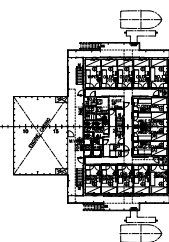
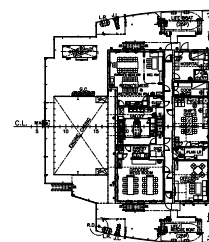
C DECK

NAV.BRI. DECK

COMPASS DECK

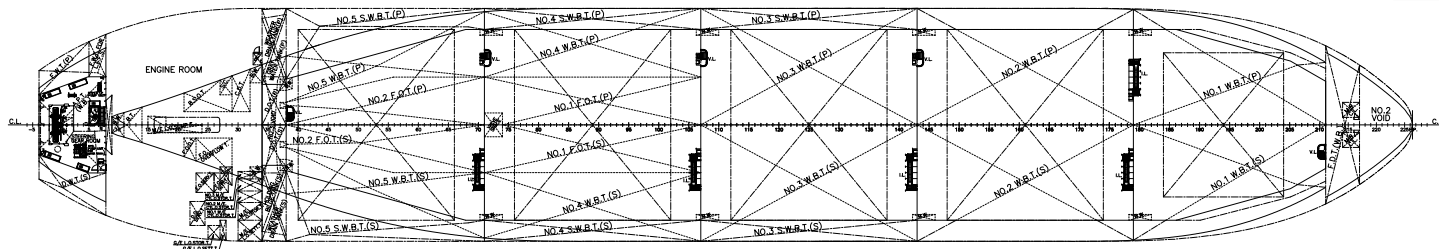
F'CLE DECK

Fr.34 SECTION



UPPER DECK

TANK TOP



PRINCIPAL PARTICULARS

LENGTH (O.A.)	182.87 M
LENGTH (P-P)	179.95 M
BREADTH (M.L.D.)	31.00 M
DEPTH (M.L.D.)	14.70 M
DRAFT (SUMMER EXT.)	10.346 M
DEADWEIGHT	39953 T
GROSS TONNAGE	25010

MAIN ENGINE: MAKITA-MITSUBI-MAN B&W 6S46ME-B8.5-HSPCR X 1 SET
 M.C.O.: 5700 kW X 105 min⁻¹
 SERVICE SPEED: about 14.0 KNOTS

Classification: NK
 Classification Character(s) and Descriptive Note(s):
 NS*/MNS*
 (BCM, BC-XII, GRAB, EQ C DG, PSPC-WBT, NC) (IWS)
 (PSCM) (HIM) (NOx-III)(SCR)
 (Double hull construction applied to all cargo holds)
 (NOx-III(2021) (M/E : SCR), (G/E(Nos.1,2,3) : SCR))

Installations Character(s) and Descriptive Note(s):
 CHG, MPP, ISA, RCF, AFS, BWM

This document (drawing) is the PROPERTY of SHIP KURUSHIMA DOCKYARD CO., LTD. and is copyrighted. It shall not be reprinted, reproduced, copied, or used for any other purpose, nor shall it be loaned, lent, rented, or otherwise disposed of without the prior written permission of SHIP KURUSHIMA DOCKYARD CO., LTD. (INCORPORATED IN JAPAN). If you have any questions, please contact SHIP KURUSHIMA DOCKYARD CO., LTD.



FRANBO ACE
 SNO.3758

GENERAL ARRANGEMENT

— FINISHED PLAN —

LIST NO. C-3

IMO NO.	9959072	SHIN KURUSHIMA DOCKYARD CO., LTD. EHIME JAPAN ENGINEERING DIVISION			
GENERAL MANAGER	R. Shimizu				
ASST. MANAGER	-----				
MANAGER	Y. Ohnishi				
DEPT. MANAGER	Y. Yamashita				
DRAWN	K. Ando	DATE	2023/2/27	DWG. NO.	C02-002-00
	A. Miyoshi	SCALE	1/250		