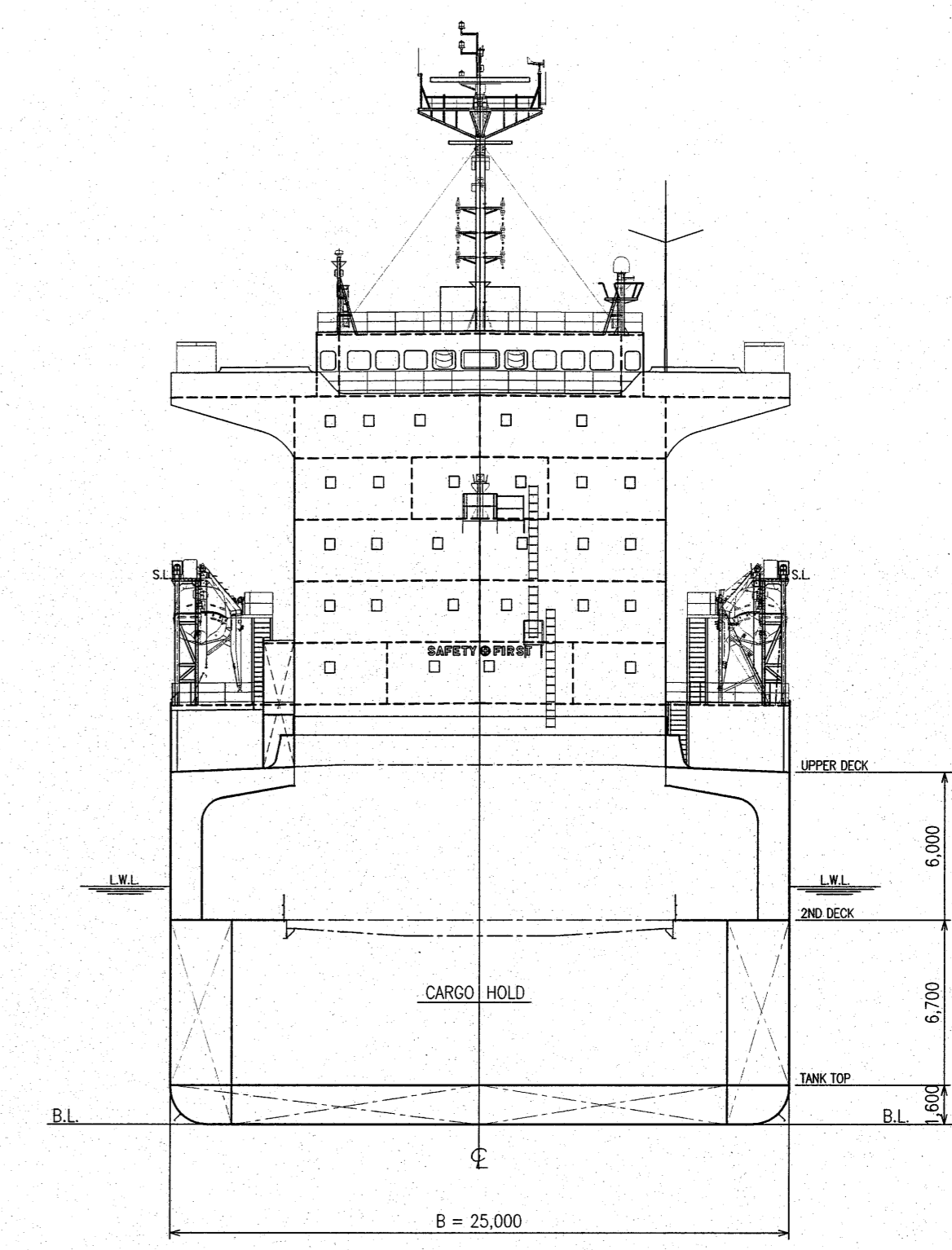
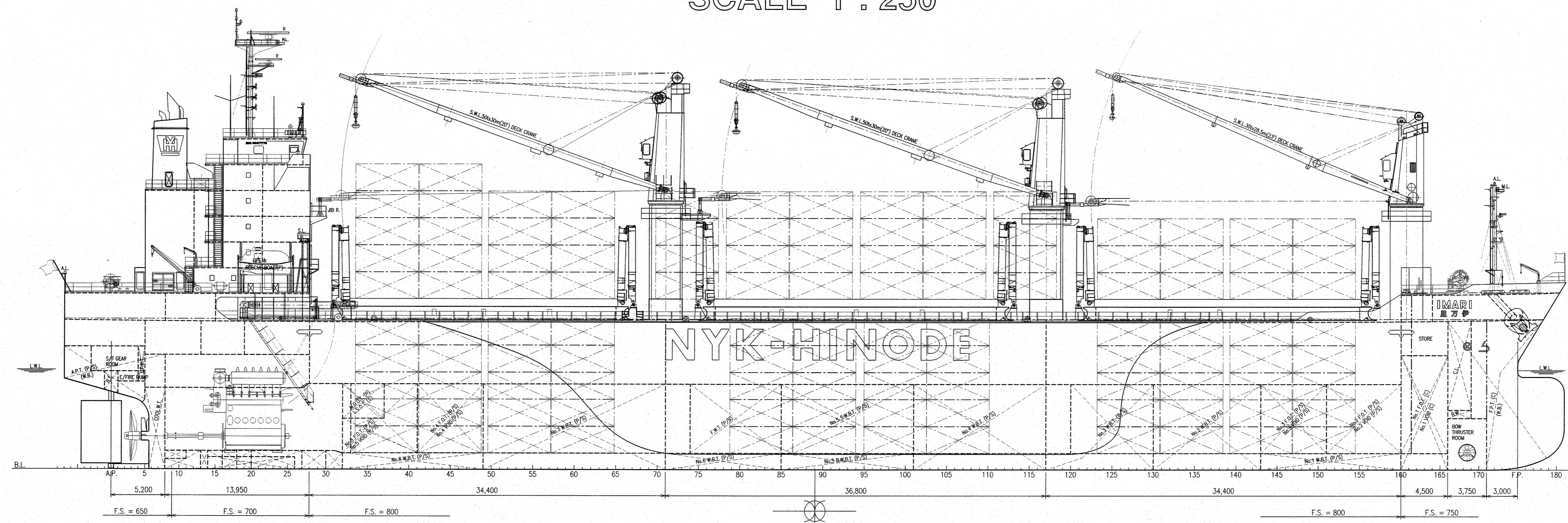


GENERAL ARRANGEMENT

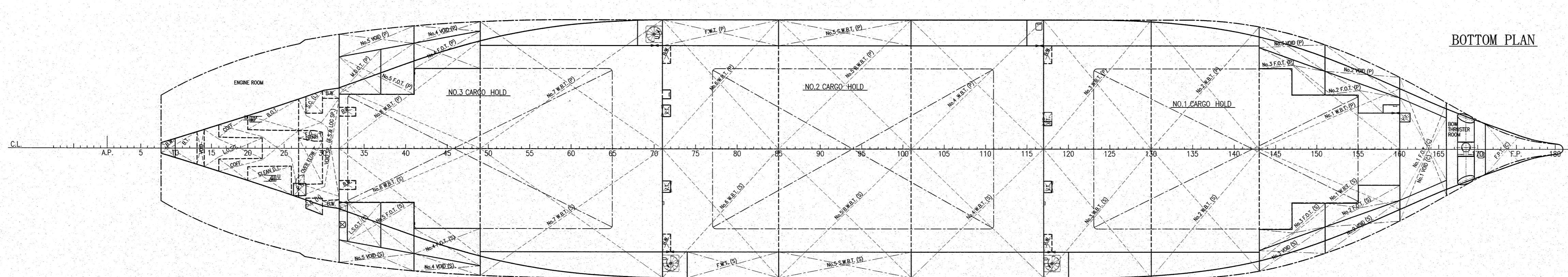
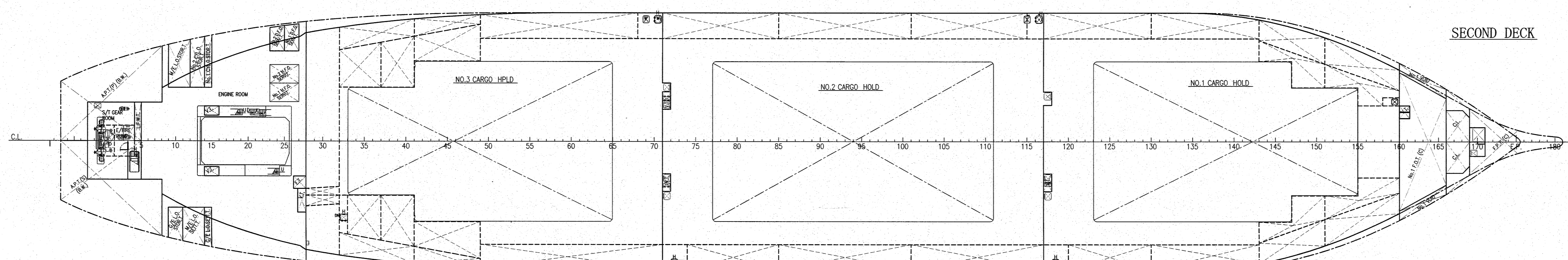
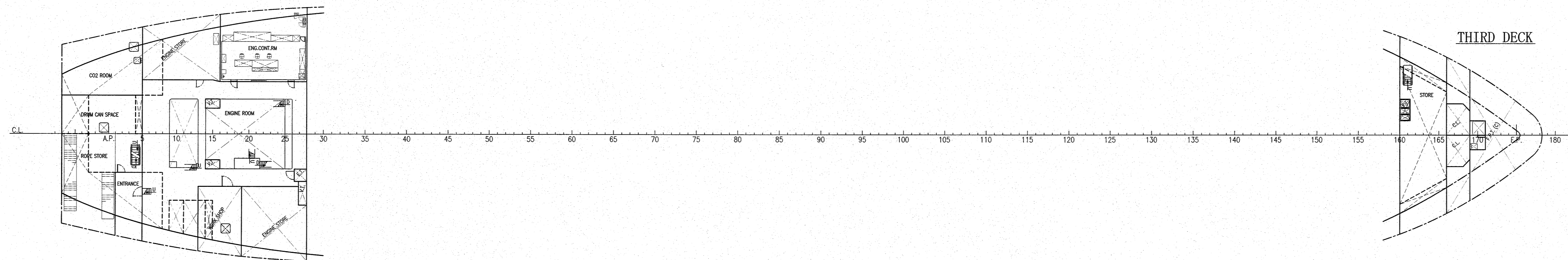
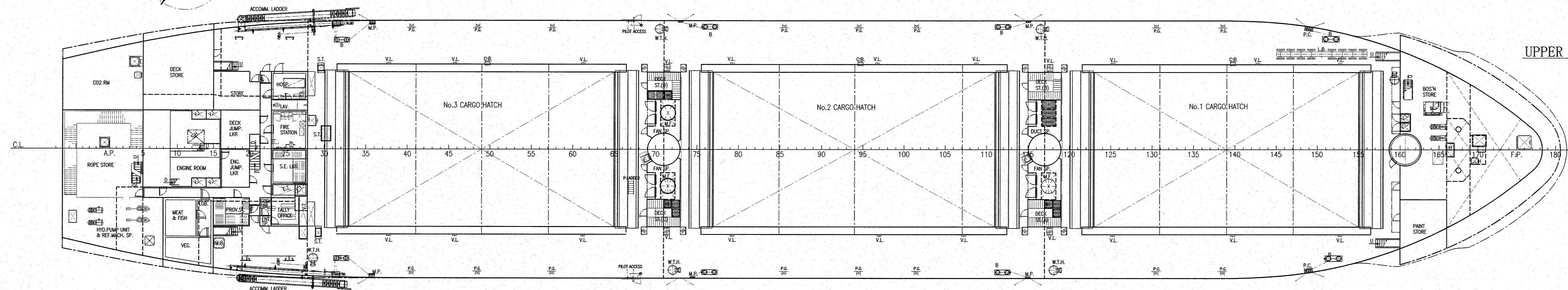
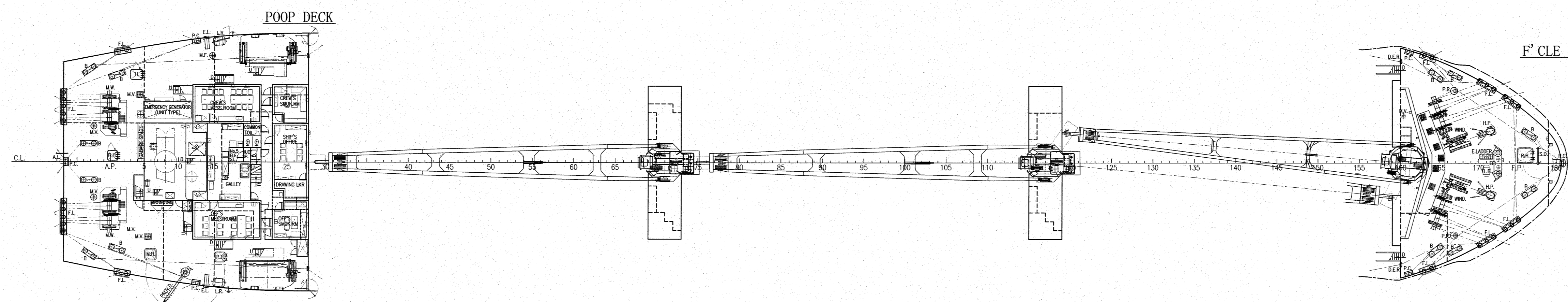
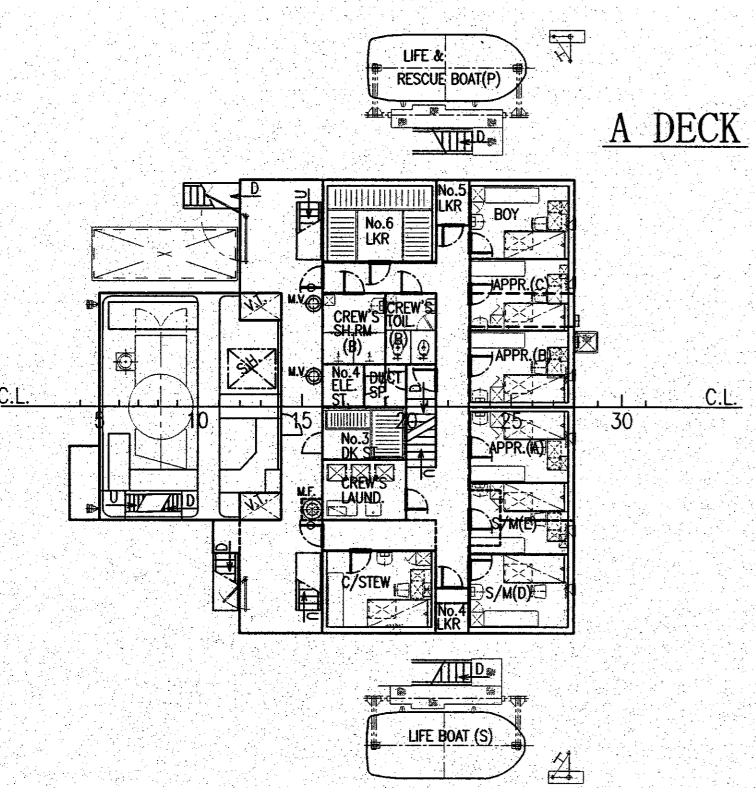
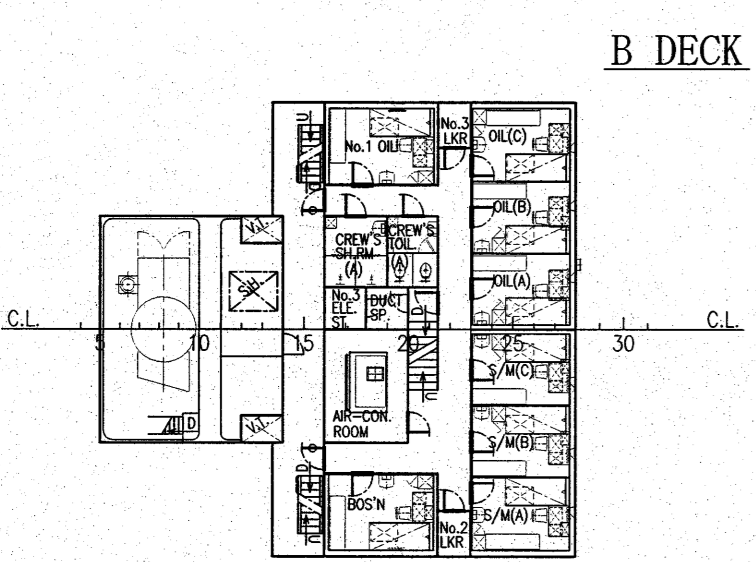
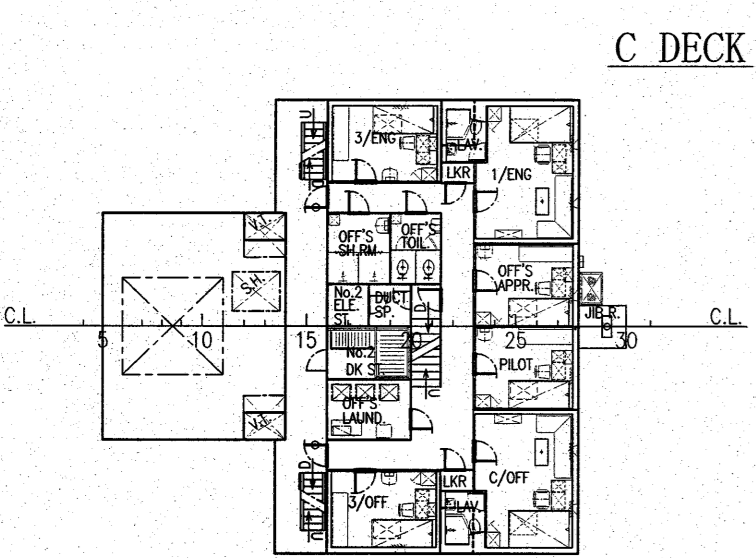
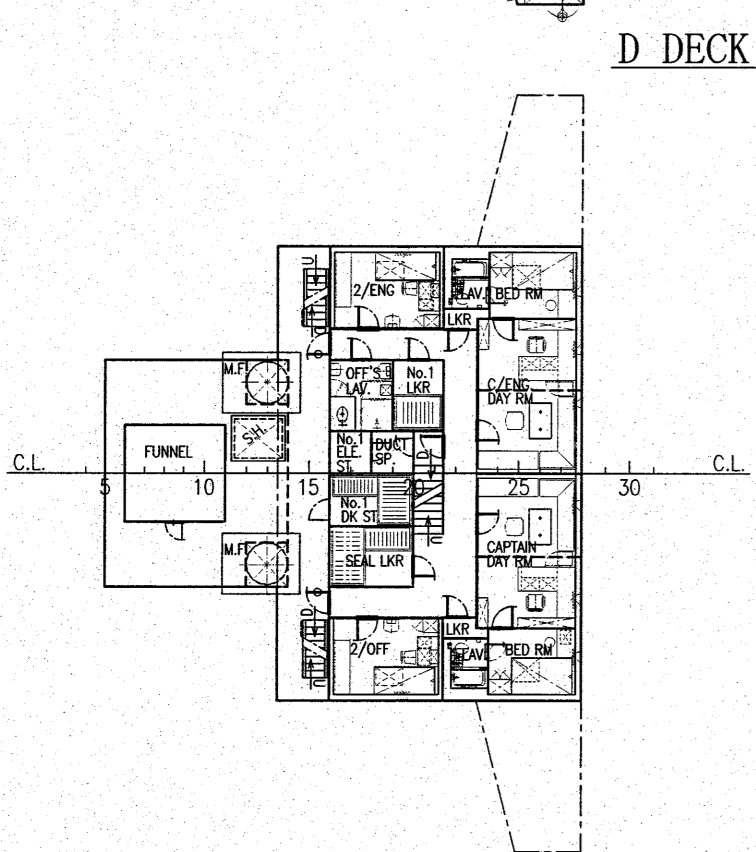
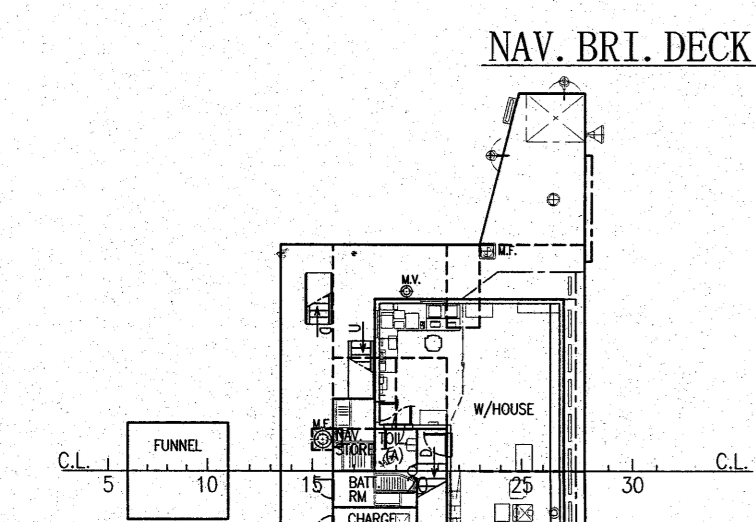
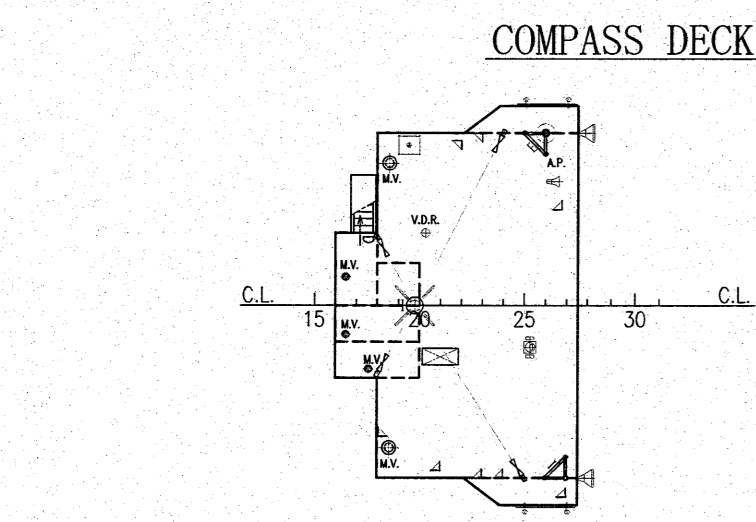
SCALE 1 : 250

BIBLIOGRAPHY

18th Nov. 2009 Drawn in our shipyard.
18th Aug. 2010 1st Rev.
29th Mar. 2012 Final Plan.



PRINCIPAL PARTICULARS		
LENGTH (O. A.)		145.20 M
LENGTH (B. P.)		136.00 M
BREADTH (M.L.D.)		25.00 M
DEPTH (M.L.D.)		14.30 M
DRAFT (SUMMER) (EXT.)		9.664 M
GROSS TONNAGE		14,122 T
DEAD WEIGHT		20,360.13 MT
MAIN ENGINE	MAN B&W 6S42MC Mk7	
	6,480 kW × 136 min ⁻¹ × 1set	
SPEED (TRIAL MAX)		17.103 Knots
CLASS	NK-NS*08-XII, Equipped for Carriage of Vehicles & Dangerous Goods, NS* FLAG PANAMA	
COMPLEMENTS		25 P



SHIP NAME IMARI
D/W 20,000 M. T. TYPE
MULTI-PURPOSE CARGO SHIP

GENERAL ARRANGEMENT

IMO No. 9567776
SHIP No. 1300
SCALE 1/250

SHITANO
SHIPBUILDING CO., LTD
DESIGNING DEPARTMENT

DEPUTY MANAGER *A. Fujino*
SECT. CHIEF *S. Maki*
CHECKED BY *I. M.*
DRAWN BY *S. Maki*
DRAWN DATE 18th, November, 2009
DRAWING No. GH-1000