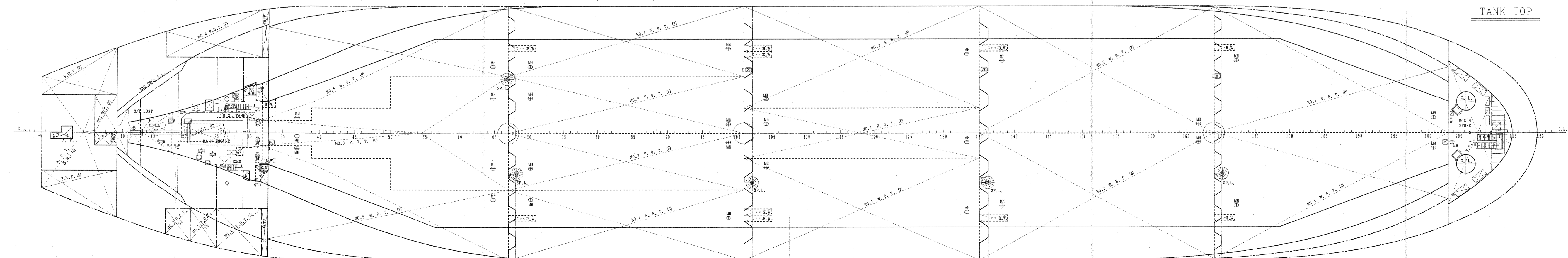
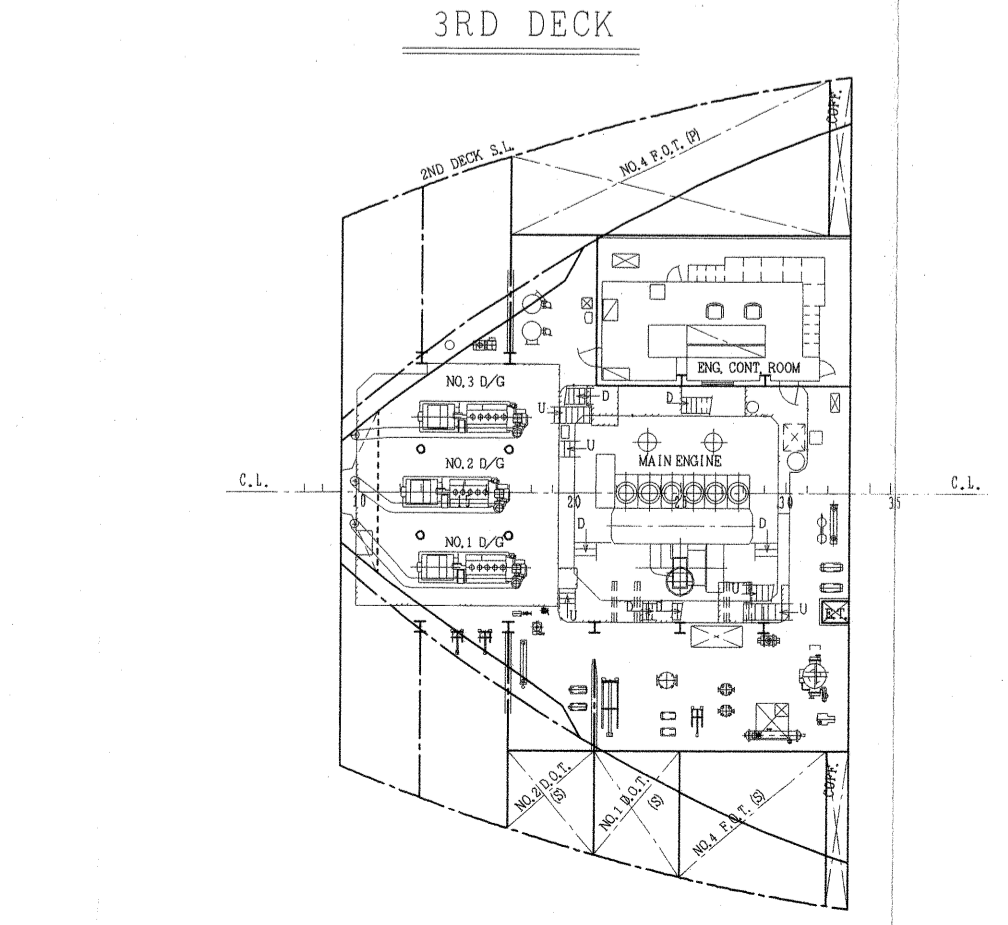
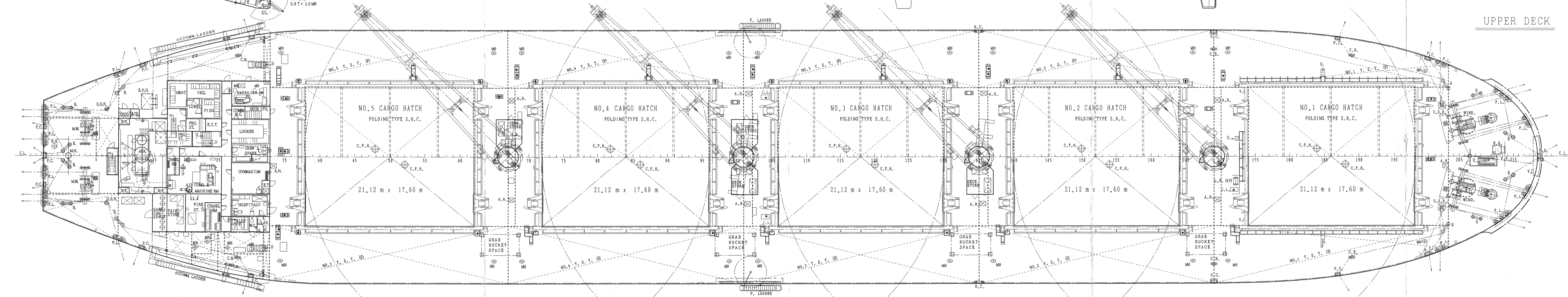
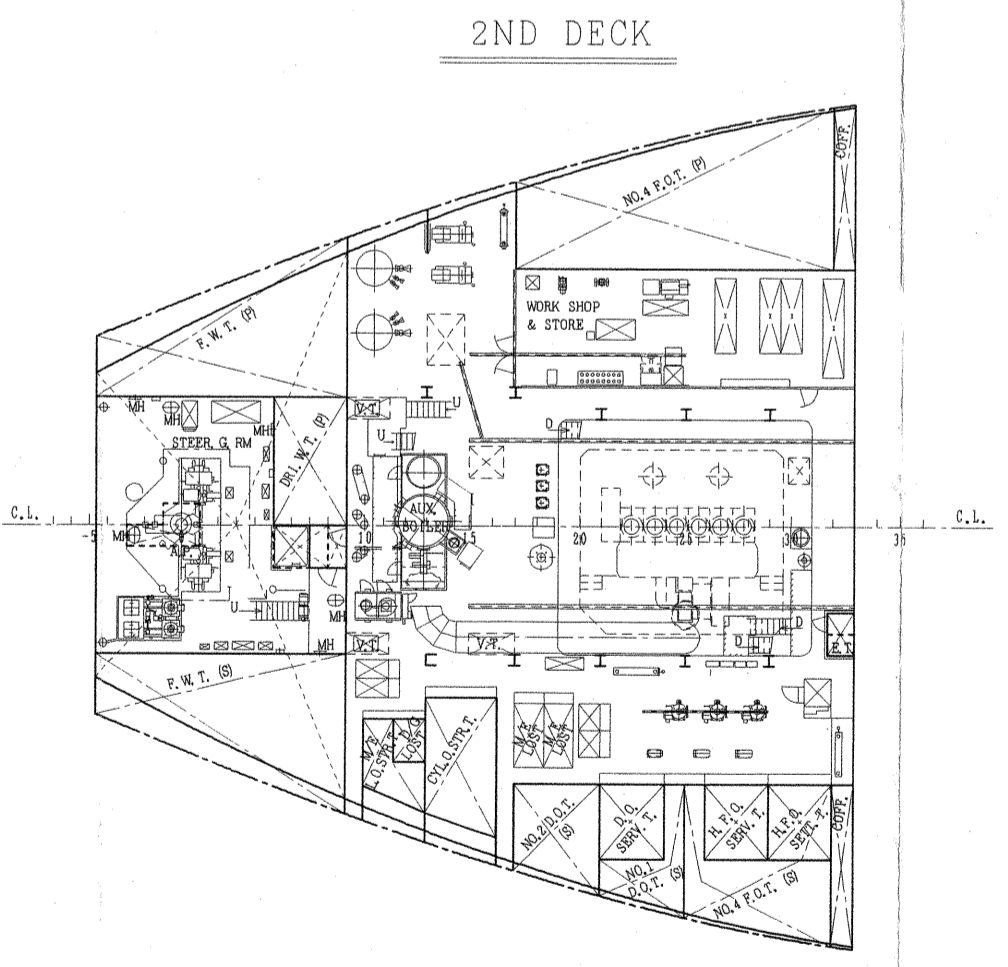
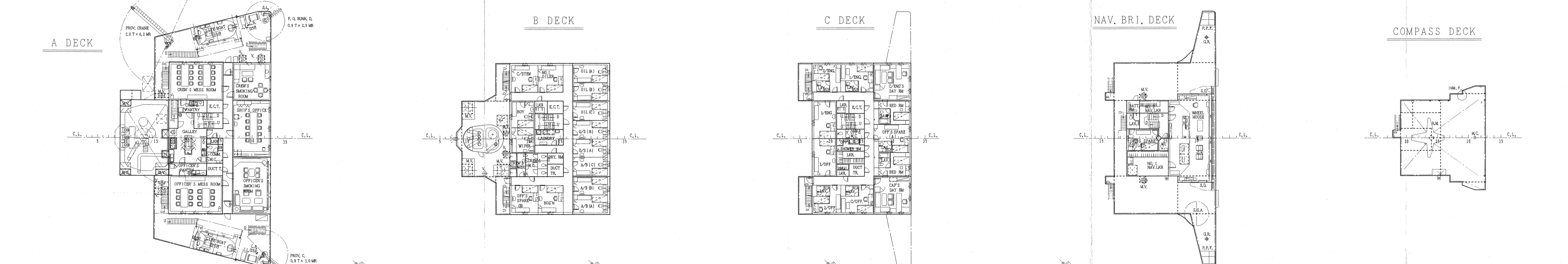
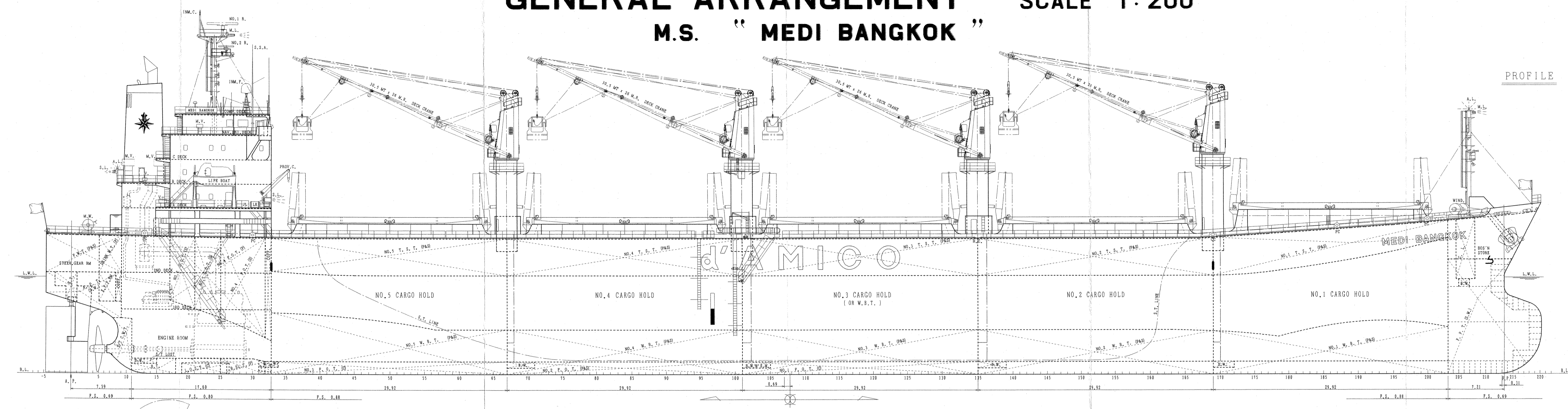
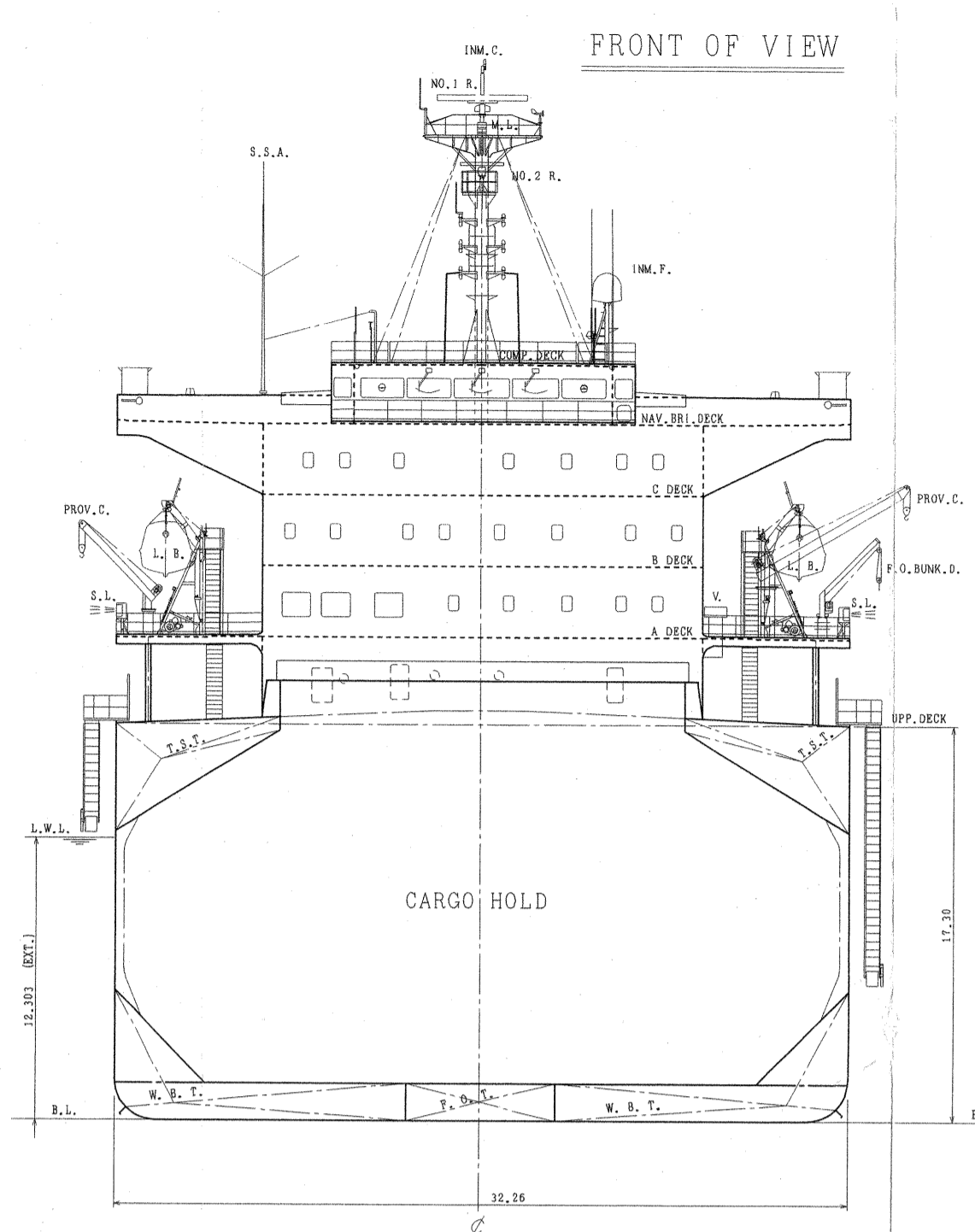


# GENERAL ARRANGEMENT

## M.S. "MEDI BANGKOK"

SCALE 1:200



PRINCIPAL PARTICULARS	
LENGTH (O.A.)	189.94 m
LENGTH (B.P.)	182.00 m
BREADTH (M.L.S.)	32.28 m
DEPTH (M.L.S.)	17.30 m
DRAUGHT (EXT.)	12.303 m
DEADWEIGHT	53,466 M.T.
HOLD CAPACITY (GRAIN)	68,927.4 M <sup>3</sup>
GROSS TONNAGE (I.C.T.M.)	29,986
NET TONNAGE (I.C.T.M.)	18,489
MAIN ENGINE	
HITACHI-MAN-BAW 6550M-C 1 unit	
MAX. OUTPUT	9,480 kW (12,889 psi) x 127 rpm
NOR. OUTPUT	8,080 kW (10,958 psi) x 120 rpm (85.0 kW)
SER. OUTPUT	7,000 kW (9,558 psi) x 115 rpm (74.2 kW)
SPEED	
NORMAL OUTPUT (ON DES. S.W.)	abt. 15.0 knots
SERVICE OUTPUT (ON DES. S.W.)	abt. 14.2 knots
TRIAL MAX.	16.240 knots

CLASSIFICATION : NIPPON KAIJI KYOKAI (NK)  
 CLASSIFICATION CHARACTERS :  
 NSF (BULK CARRIER, STRENGTHENED FOR HEAVY CARGOES, No. 24)  
 HOLDS MAY BE EMPTY, (ESP) and MNS ?  
 INSTALLATIONS CHARACTERS : CHG, WPP, LSA, RCF, MO

COMPLEMENT				
DECK PART	ENGINE PART	BUSINESS PART		
CAPTAIN	1	CHIEF ENGINEER	1	
CHIEF OFFICER	1	1ST ENGINEER	1	
2ND OFFICER	1	2ND ENGINEER	1	
3RD OFFICER	1	3RD ENGINEER	1	
ROATSWAIN				
1	NO. 1 OILER	1	CHIEF STEWARD	
1	OILER	1	BOY	
1	WIPER	1		
TOTAL NUMBER OF OFFICER				8 P.
TOTAL NUMBER OF CREW				13 P.
SPARE OFFICER (JUNIOR OFFICER CLASS)				2 P.
CREW (RATING CREW CLASS)				1 P.
SPARE OFFICER (PILOT, JUNIOR OFFICER CLASS)				1 P.
GRAND TOTAL				25 P.

**CAUTION**  
 THIS DRAWING OR DOCUMENT IS THE PROPERTY OF IMABARI DESIGN GROUP CO., LTD.  
 REPRODUCTION, COPYING, UTILIZATION FOR PURPOSES OTHER THAN AGREED, WITHOUT THE WRITTEN PERMISSION OF IMABARI DESIGN GROUP CO., LTD. IS STRICTLY PROHIBITED.



FINISHED PLAN  
 CON: IMABARI DESIGN GROUP  
 PERK: HULL DESIGN TEAM  
 MANAGER: [Signature]  
 CHIEF: [Signature]  
 CHECKED: [Signature]  
 DRAWN: [Signature]  
 SHEET NO. CLASS SCALE DWG. NO.  
 S-617 NK 1/200 C-0200

M.S. "MEDI BANGKOK"  
 GENERAL ARRANGEMENT