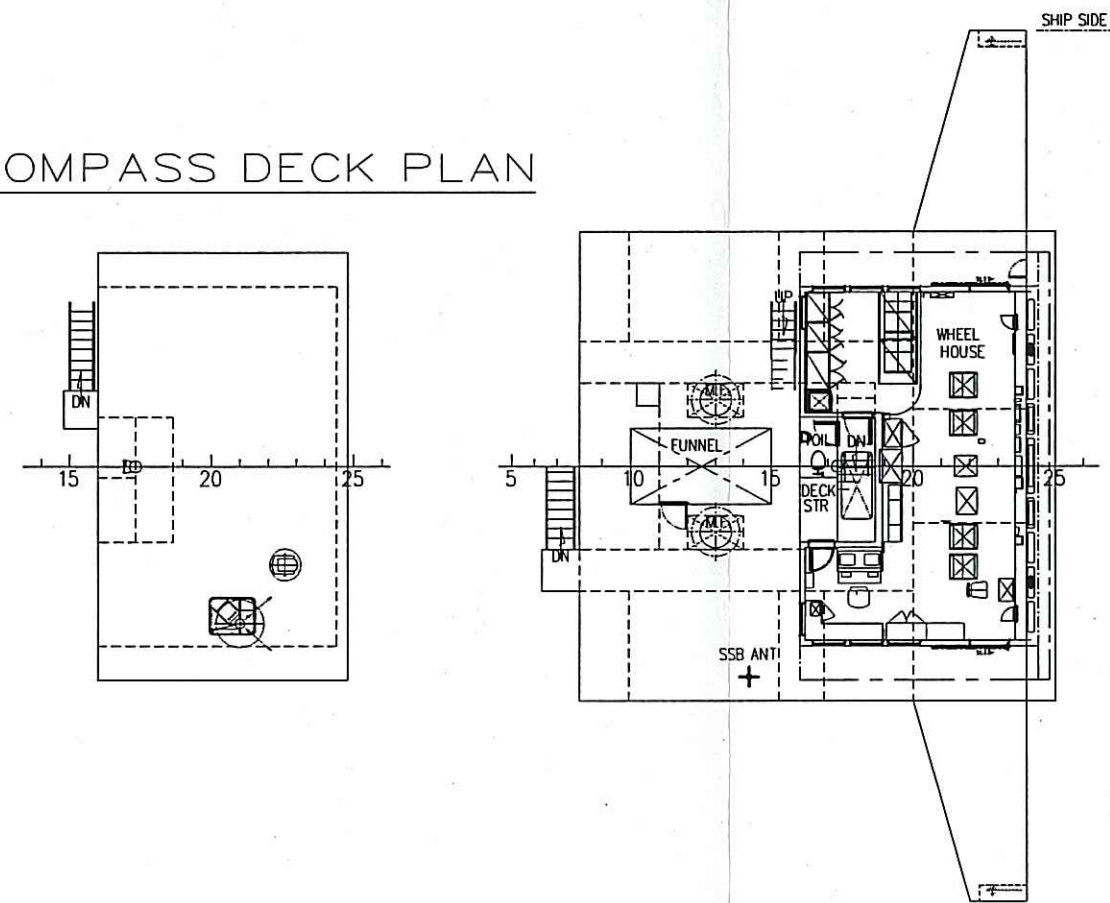


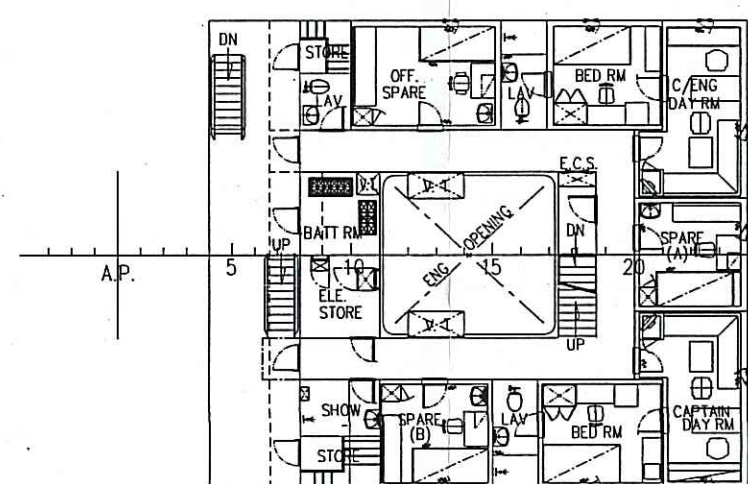
16,500 D.W.T. TWEEN DECKER GENERAL ARRANGEMENT 'M.V. THORCO LOHAS'

NAV. BRI. DECK PLAN

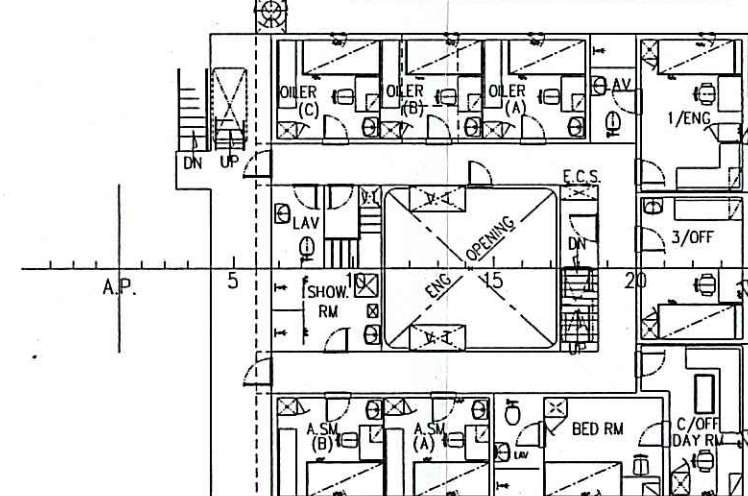
COMPASS DECK PLAN



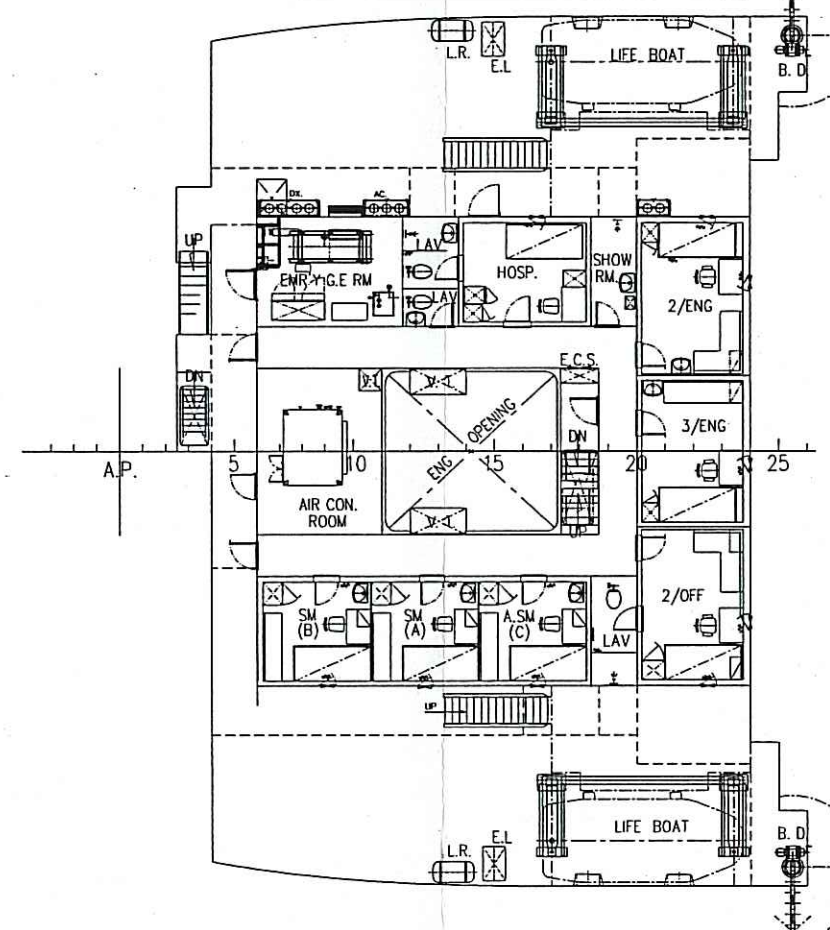
CAPT DECK PLAN



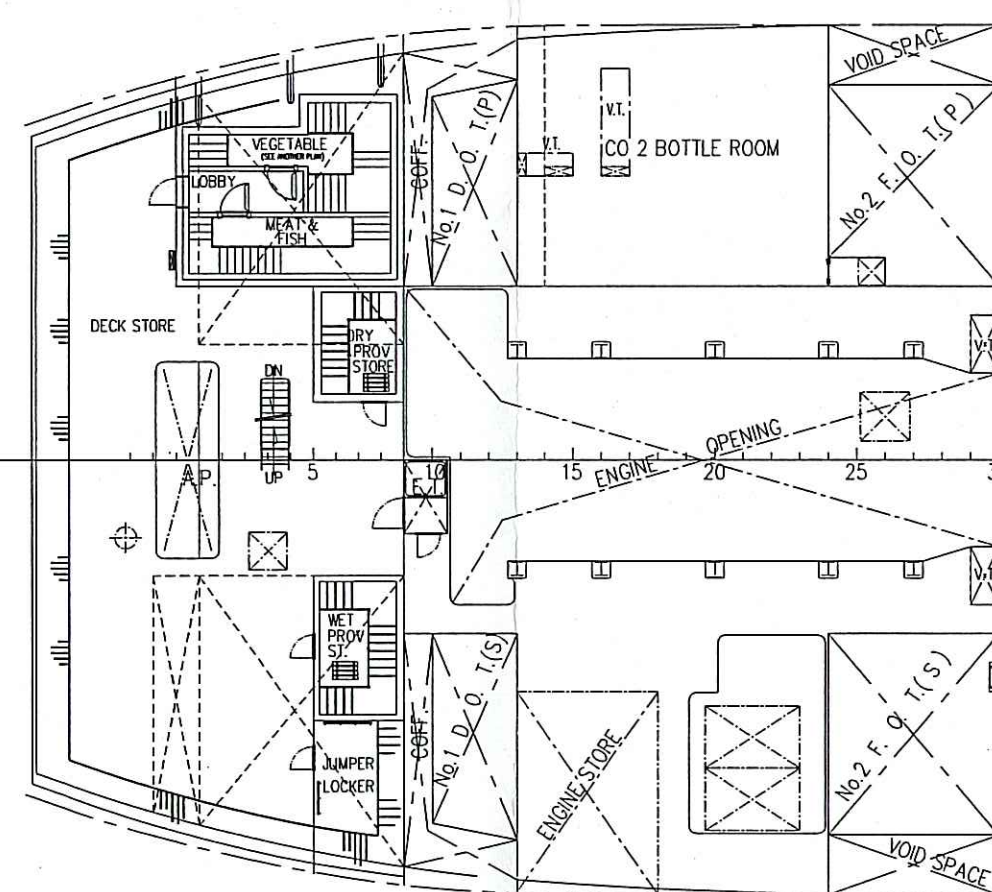
A DECK PLAN



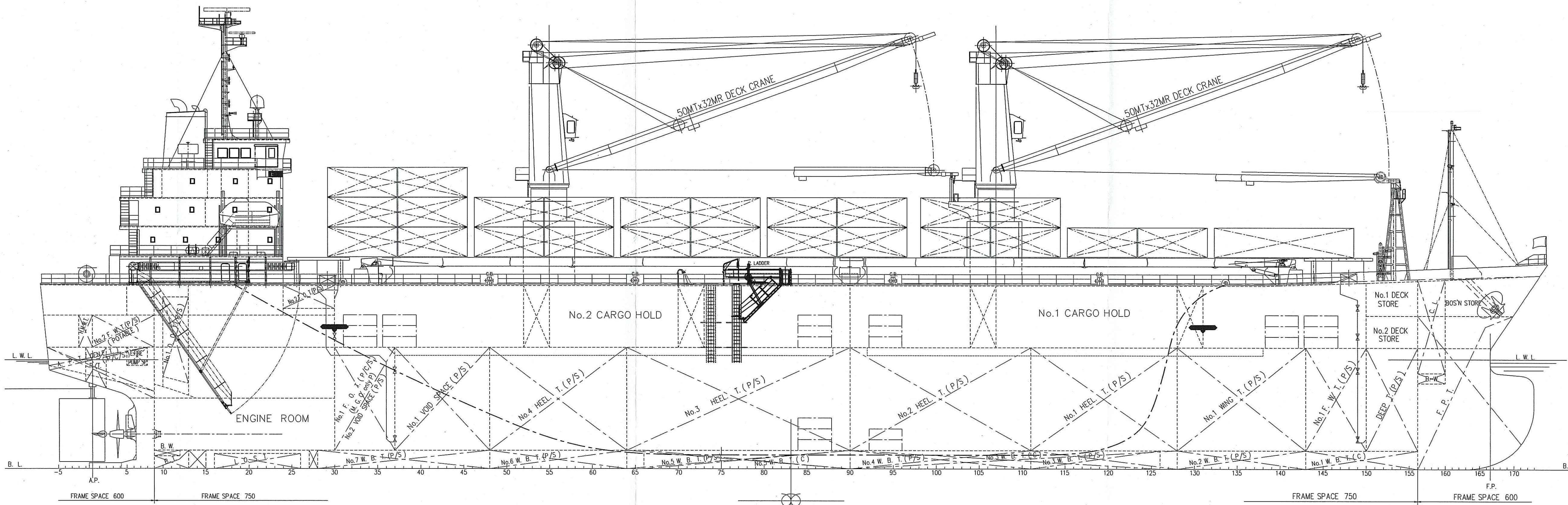
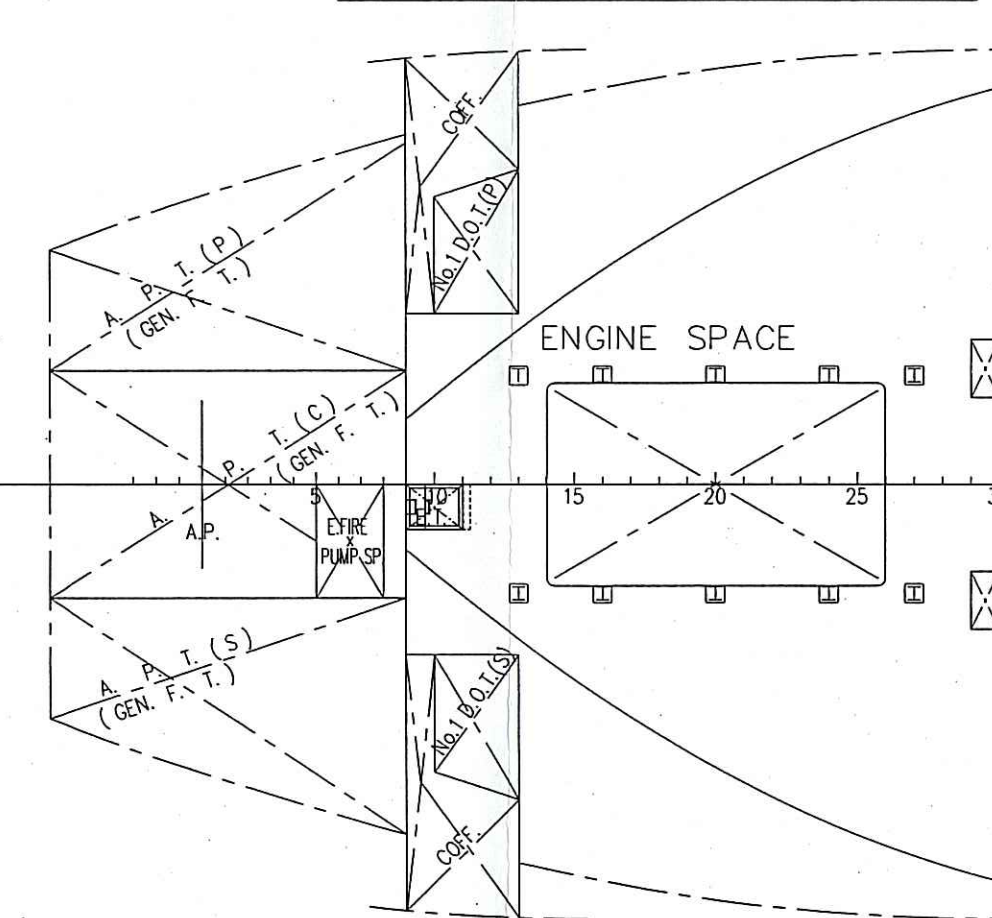
BOAT DECK PLAN



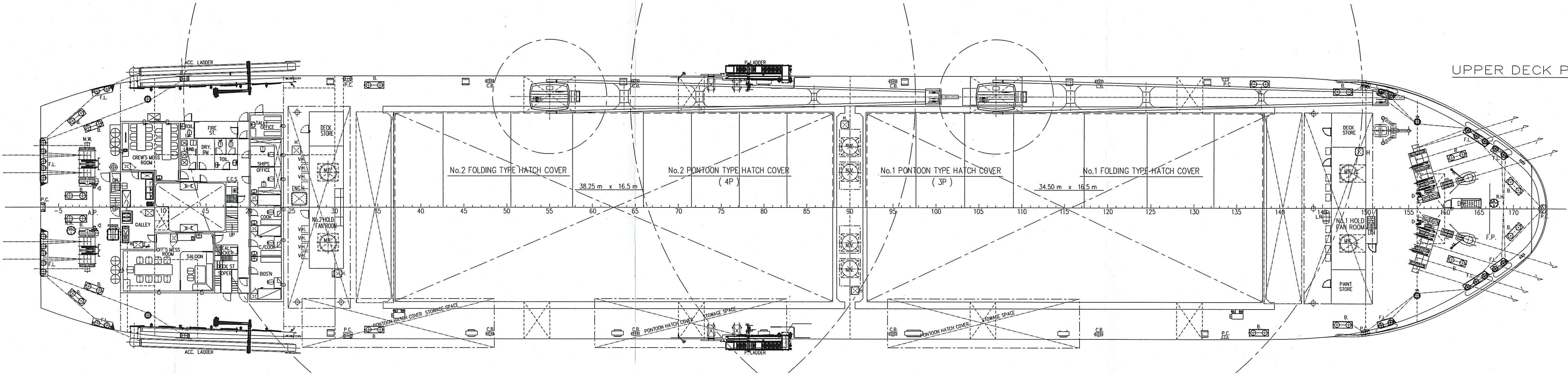
AFT PARTIAL DECK PLAN



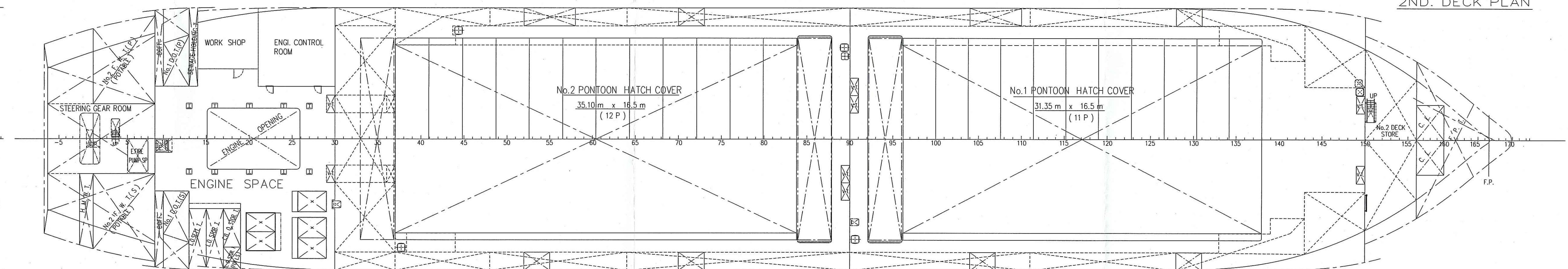
ENGINE FLAT DECK PLAN



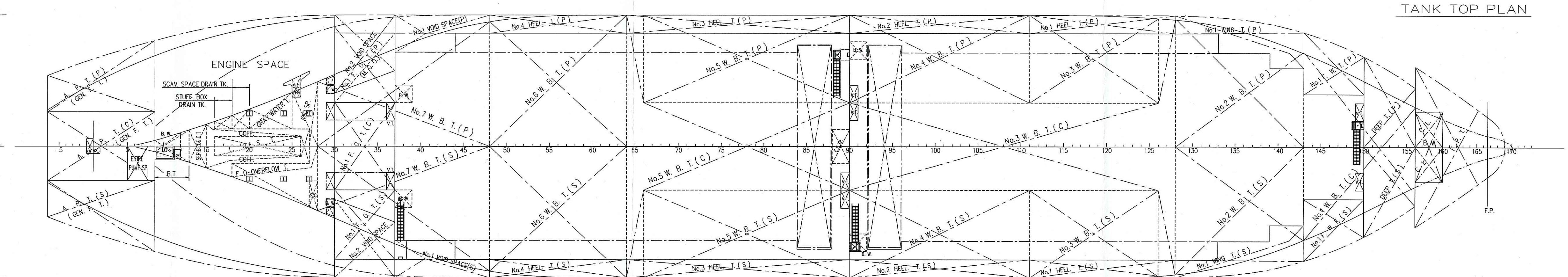
UPPER DECK PLAN



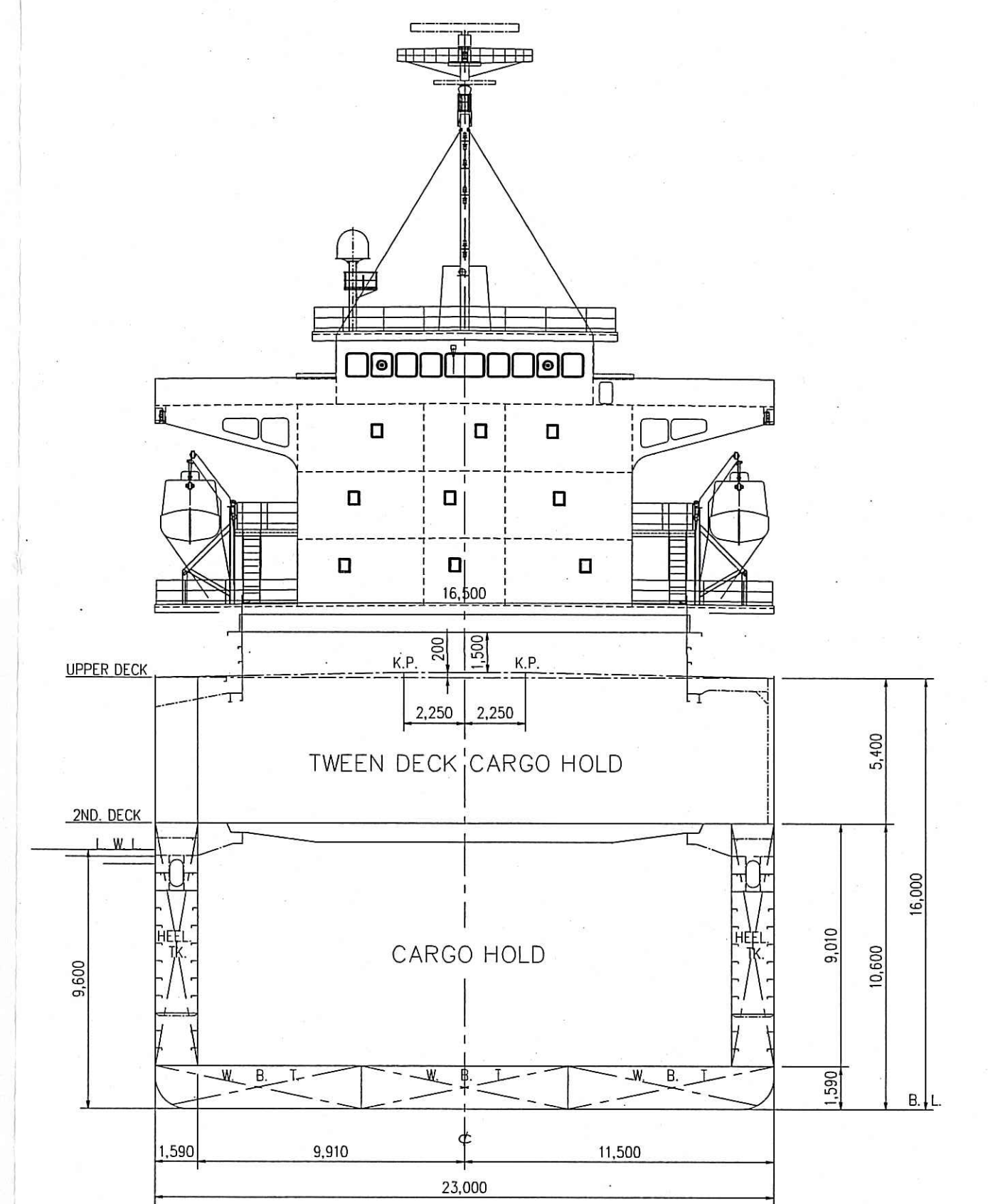
2ND. DECK PLAN



FORE PARTIAL DECK PLAN



TANK TOP PLAN



PRINCIPAL DIMENSIONS

LENGTH (O.A.)	131.66 M
LENGTH (P.P.)	122.00 M
BREADTH (M.L.D.)	23.00 M
DEPTH (M.L.D.)	16.00/10.60 M
DRAFT (M.L.D.)	9.60 M
DRAFT (SCANT)	9.70 M
GROSS TONNAGE	13,110 T
DEAD WEIGHT	16,966 T
MAIN ENGINE (DIESEL)	5,180 KW
SPEED (TRIAL MAX.)	16.40 KT
SPEED (FULL LOAD SEA SERVICE)	13.50 KT
COMPLEMENT	22 P
NAVIGATION AREA	OCEAN GOING
CLASS	NK NS*(BC-XII, EQ C DG, PSPC-WBT)(WS)(HM), MNS*

C.No. 162336
Date: APR 28, 2016
Attached Plan to the Survey Record
Surveyed to Nippon Kaiji Kyokai

FINISHED PLAN



S.No.1101	THORCO LOHAS		
16,500 D.W.T. TWEEN DECKER			
GENERAL ARRANGEMENT			
DRAWN BY	K.T.	SCALE	1 / 200
CHECKED BY	S.M.		
SEC. CHIEF	A. YAMAGUCHI	HONDA HEAVY INDUSTRIES CO., LTD. DESIGN DEPT.	
DEPT. CHIEF	S. MATSUMOTO	OITA JAPAN	
DWG. DATE	Apr. 21th., 2016		
DWG. NO.	HC - 001		